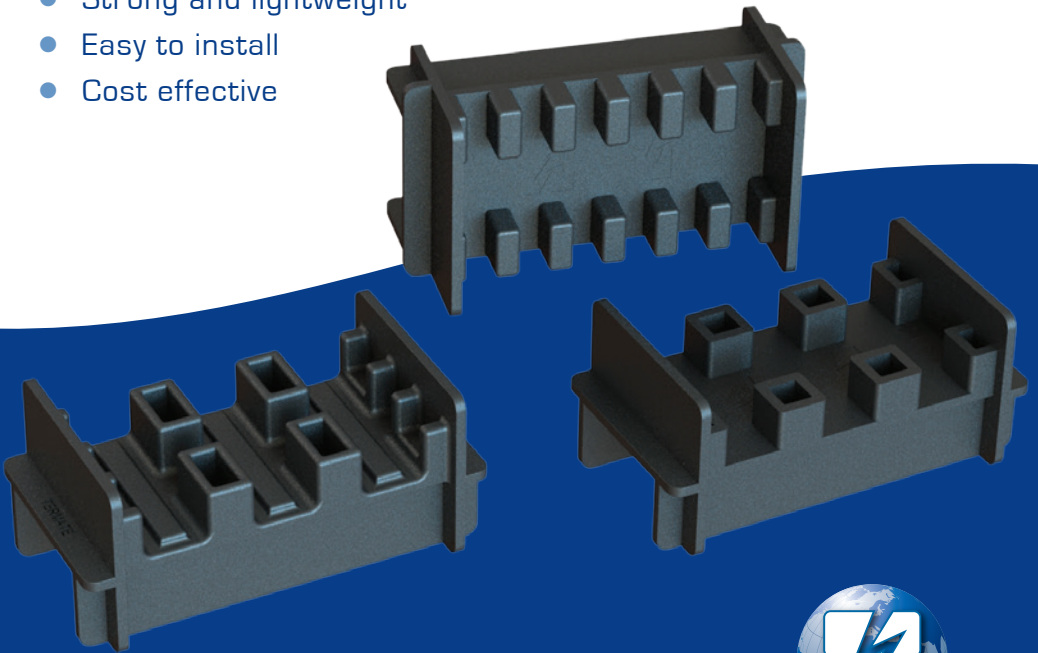


Small & MIGHTY

Termate's RMS supports accept up to 6 x 5 mm or 3 x 10 mm conductors with a superb low rating. Now that's mighty indeed!

- Versatile pole configurations and phase centres
- Version for up to 3 x 10 mm insulated conductors available
- low rating 50kA/3 sec, 65kA/1sec
- Strong and lightweight
- Easy to install
- Cost effective



 +44 (0)115 978 4652

 sales@termate.com



TERMATE



TERMATE

Termate have manufactured high performance components since 1956, supplying a global customer base from our U.K. headquarters.

For over 50 years we have independently tested our products to ensure that they meet and exceed the demands of international standards including IEC 61439. We work with leading test houses and certification bodies including kATF, ASTA and Dekra.

Our products offer superb performance and longevity, incorporating materials manufactured to our specification. We listen to our customers requirements and respond, which has led to the introduction of versatile products. These can be used in more applications reducing the total costs to our partners.

We are well known by our customers for the detailed application engineering and the first class customer service we offer.

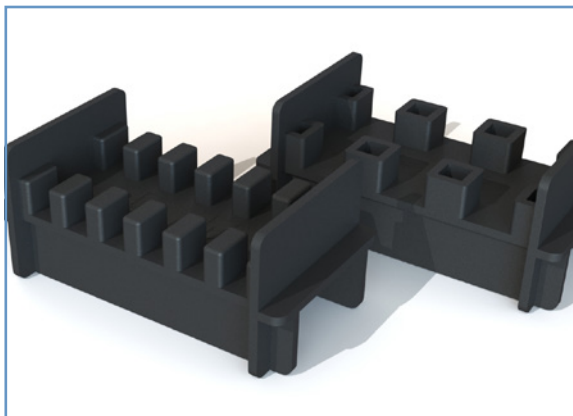
This leaflet displays our range of RMS Supports, part of our LV Power Products Range which comprises various types of Busbar Supports, Busplugs, Stand-offs, Through Wall Bushings, and Components for Withdrawable Systems. These products are all manufactured with the latest equipment at our facility in Nottingham.

We hope that our RMS Supports are of interest. If you would like to receive a quote, application help or learn more about any of our products, we would be delighted to hear from you.

You can find out more information by visiting our website at www.termate.com, alternatively you can email our sales team at sales@termate.com or call **+44 (0)115 978 4652**.

RMS Busbar Supports

RMS6-5 & RMS3-10



Properties

Material:	Glass Reinforced Polyamide 6.6
Conductor Temp:	140°C†
Flammability:	UL94-V0
Glow Wire:	960°C
Equipment Voltage U_e :	1000V
Insulation Voltage U_i :	1000V
Impulse Voltage U_{imp} :	12kV

† In line with the limits set out in IEC 61439, insulating components in contact with conductors may be required to continuously operate at an average of 140°C (Max 145°C). This range of products meets the requirement, the material for them being assigned thermal class F established using methods similar to IEC 60085.

Termate is committed to the highest standard of Customer Focus and we have made every effort to maintain the accuracy and completeness of the information provided in this catalogue. Where improvements to our products affect their installation and usage we endeavour to contact any Customers who may be affected.

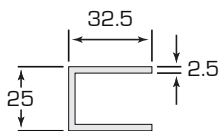
If you need to rely on our technical data or dimensions in your application, please contact us for further confirmation or detailed dimensional drawings/3D models.

Warranty as stated in Encompass Terms and Conditions of Trading is void if any modification is made to the warranted product.

Fault Levels – Insulator tested at 300 mm spacing

Type	Conductors	Support Centres	Termate Icw Rating	Duration
RMS6-5	6 x 50 x 5	110	50kA	1 second
RMS3-10	1 x 50 x 10	110	50kA	3 seconds
RMS3-10	2 x 50 x 10	110	50kA	3 seconds
RMS3-10	3 x 50 x 10	130	65kA	1 second
RMS3-10	3 x 50 x 10	130	50kA	3 seconds
RMS3-10	3 x 75 x 10	130	65kA	1 second
RMS3-10	3 x 75 x 10	130	50kA	3 seconds

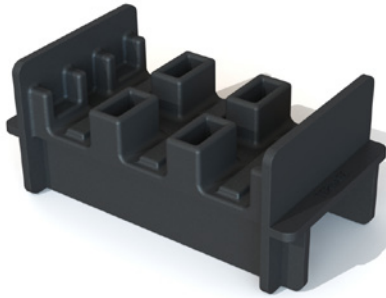
Mounting Rail



Installation details with finished hole dimensions after painting or plating.

Slot dimensions should be 15 x 10 mm, tolerance of ± 0.3 mm on both dimensions

RMS Busbar Supports for Insulated Copper RMSI3-10



Properties

Material:	Glass Reinforced Polyamide 6.6
Conductor Temp:	140°C [†]
Flammability:	UL94-V0
Glow Wire:	960°C
Equipment Voltage U_e :	1000V
Insulation Voltage U_i :	1000V
Impulse Voltage U_{imp} :	12kV

[†] In line with the limits set out in IEC 61439, insulating components in contact with conductors may be required to continuously operate at an average of 140°C (Max 145°C). This range of products meets the requirement, the material for them being assigned thermal class F established using methods similar to IEC 60085.

Termate is committed to the highest standard of Customer Focus and we have made every effort to maintain the accuracy and completeness of the information provided in this catalogue. Where improvements to our products affect their installation and usage we endeavour to contact any Customers who may be affected.

If you need to rely on our technical data or dimensions in your application, please contact us for further confirmation or detailed dimensional drawings/3D models.

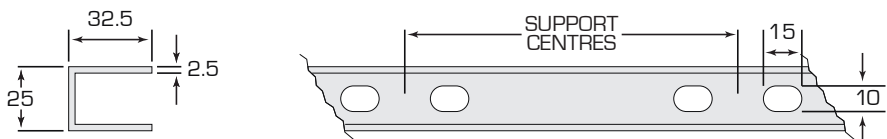
Warranty as stated in Encompass Terms and Conditions of Trading is void if any modification is made to the warranted product.

Fault Levels – Based on 300 mm spacing

Type	Conductors	Support Centres	Termate Icw Rating	Duration
RMSI3-10	1 x 50 x 10*	110	50kA	1 second
RMSI3-10	2 x 50 x 10*	110	50kA	1 second
RMSI3-10	3 x 50 x 10*	130	50kA	1 second
RMSI3-10	3 x 75 x 10*	130	50kA	1 second

* Width shown is nominal copper width. Total width of conductor including insulation cannot exceed 11.5 mm

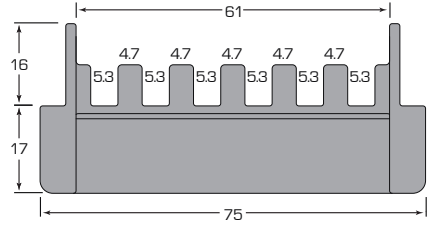
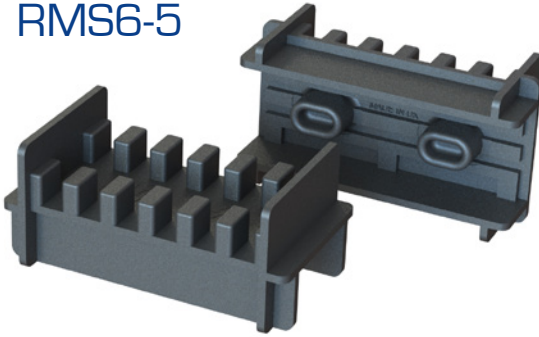
Mounting Rail



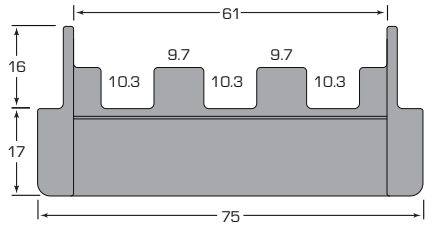
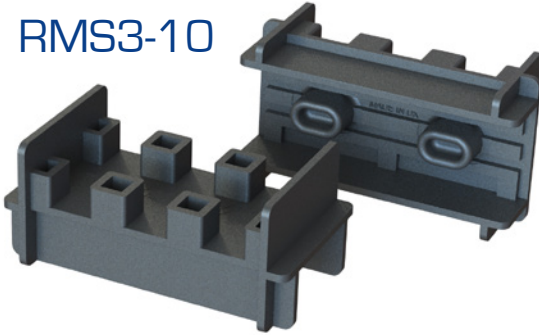
Installation details with finished hole dimensions after painting or plating.

Slot dimensions should be 15 x 10 mm, tolerance of ± 0.3 mm on both dimensions

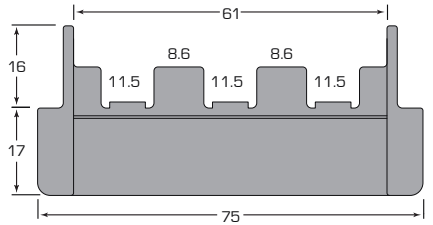
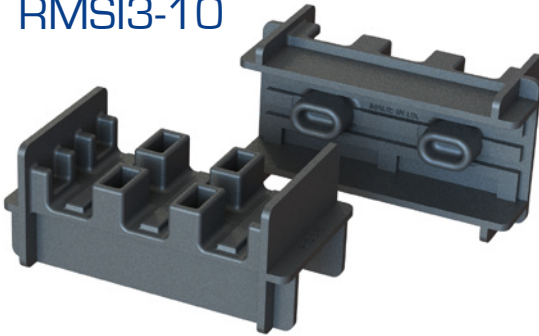
RMS6-5



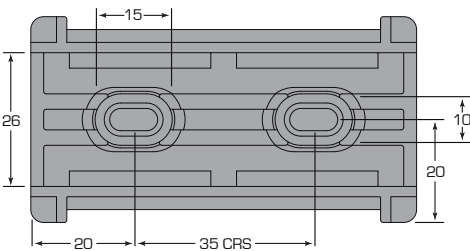
RMS3-10



RMSI3-10



Base Detail



Height from top of Mounting Rail to bottom of slot	
Type	Height
RMS6-5	4.0 mm
RMS3-10	4.0 mm
RMSI3-10	5.5 mm



TERMATE

Termate Limited
John Street
New Basford
Nottingham
NG7 7HL

www.termate.com

 +44 (0)115 978 4652

 sales@termate.com